

CAROLINA ECOSYSTEMS, INC.

Date: March 2012

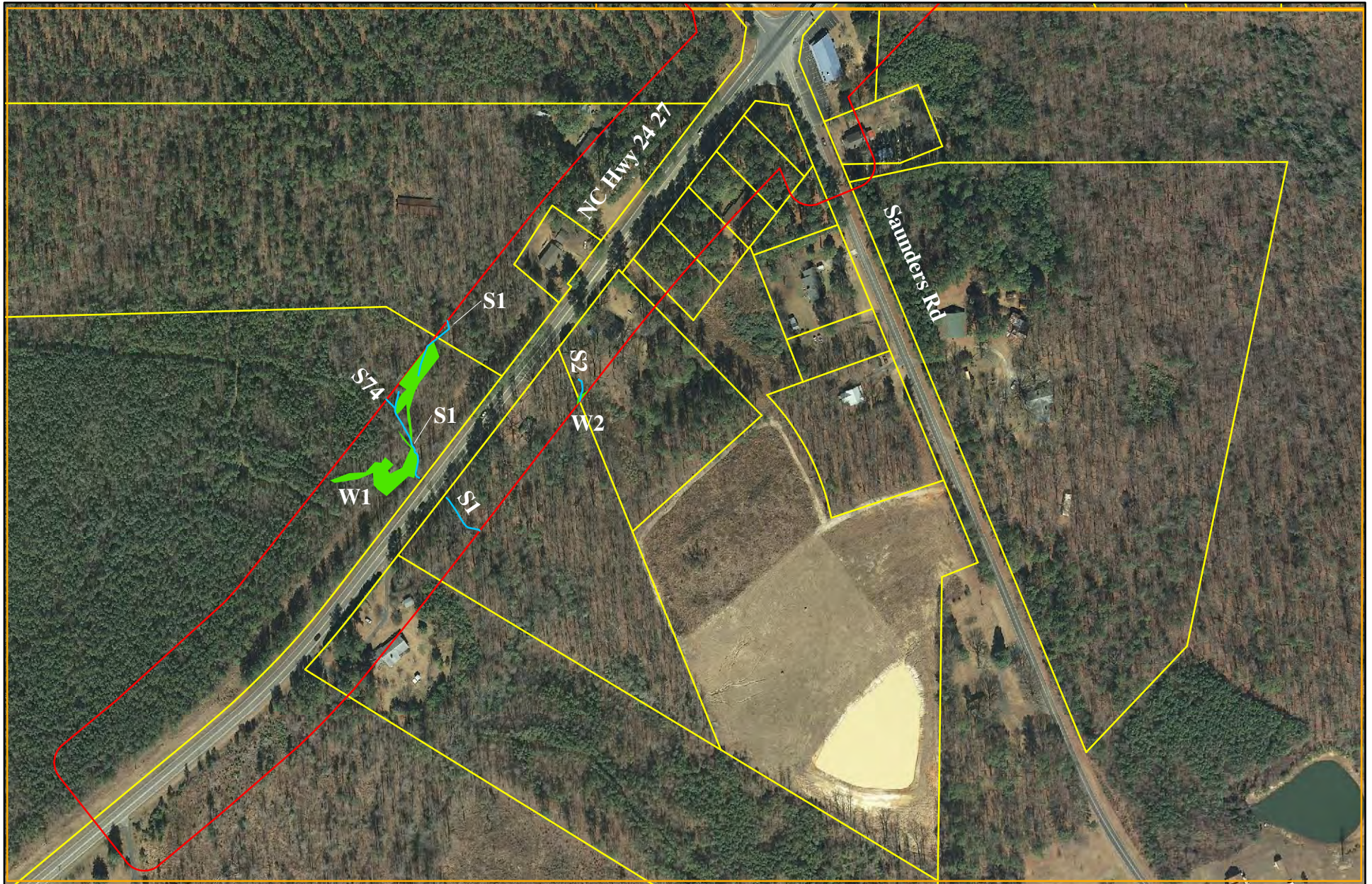


0 0.25 0.5 Miles

- USGS Streams
- Study Area
- NCDOT Roads
- Map Sheet Limits

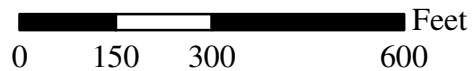
Map Index

R-0623
JD Appeal Map



CAROLINA ECOSYSTEMS, INC.

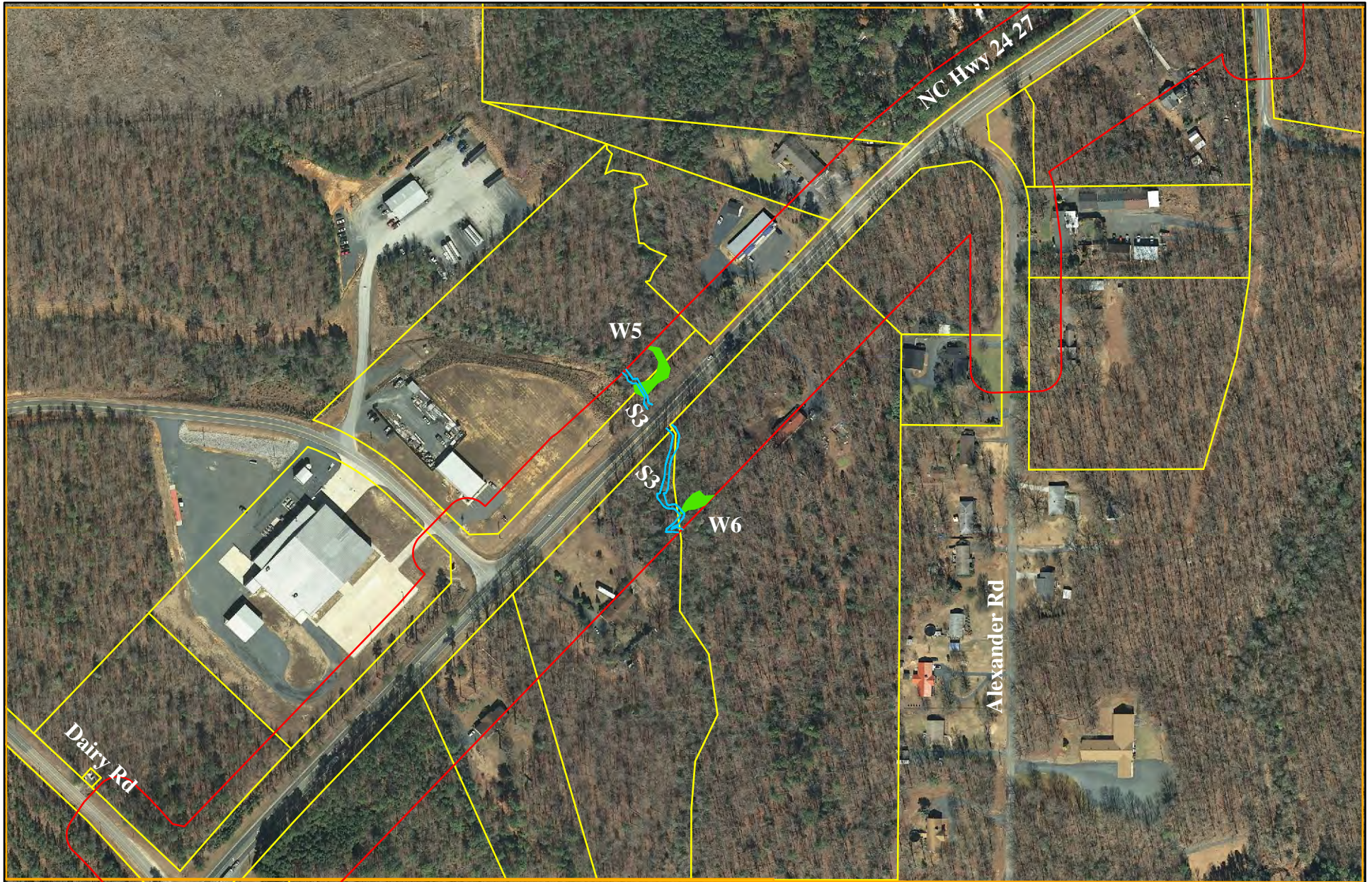
Date: March 2012



- Streams
- Study Area
- Wetlands
- Map Sheet Limits
- Ponds
- Parcel Boundary

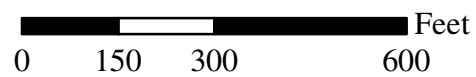
Sheet 1







**R-0623
JD Appeal Map**



**CAROLINA
ECOSYSTEMS, INC.**

Date: March 2012



-  Streams
-  Wetlands
-  Ponds
-  Study Area
-  Map Sheet Limits
-  Parcel Boundary

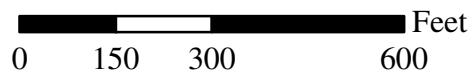
Sheet 2







**R-0623
JD Appeal Map**



**CAROLINA
ECOSYSTEMS, INC.**

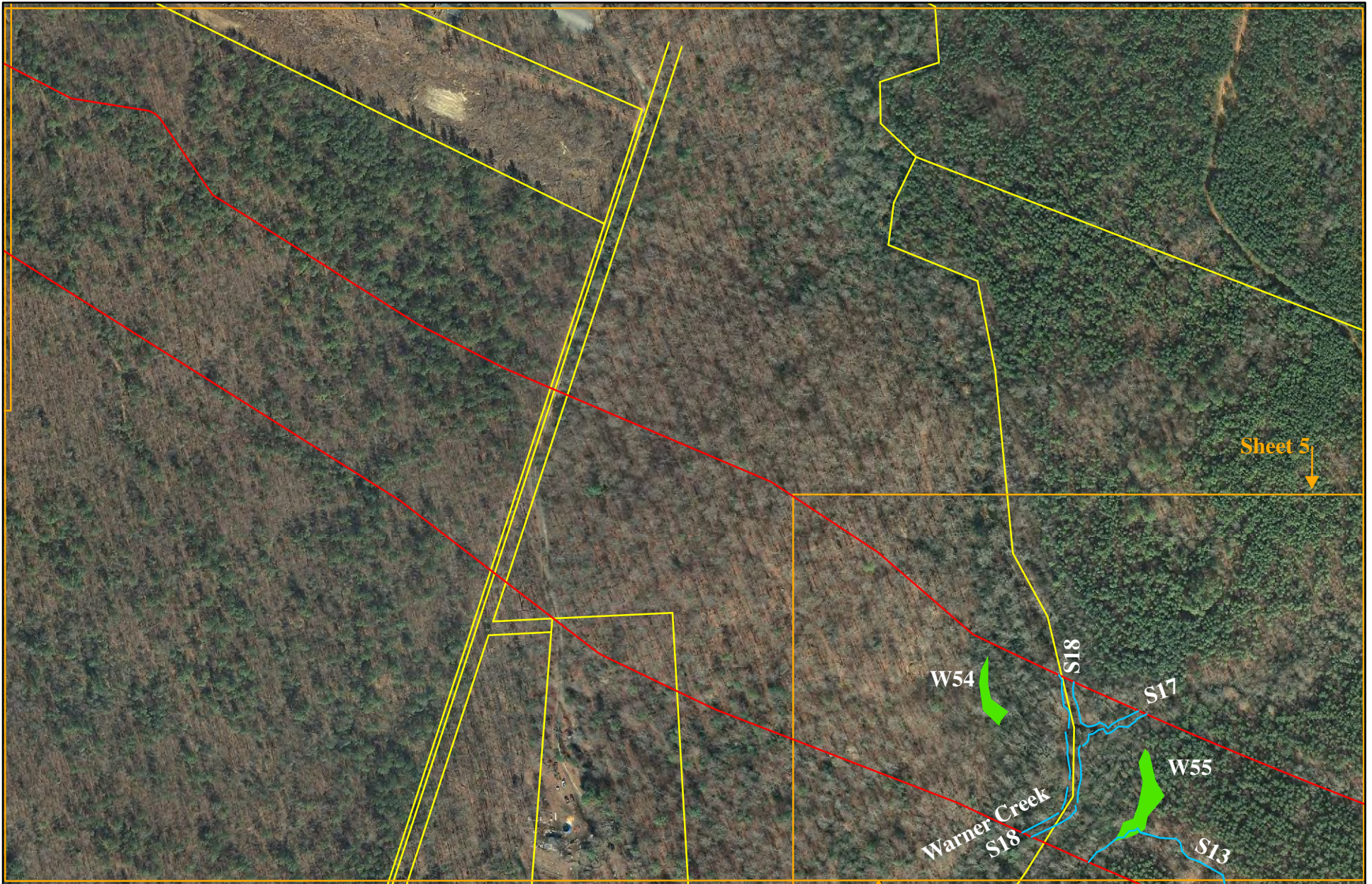
Date: March 2012



-  Streams
-  Study Area
-  Wetlands
-  Map Sheet Limits
-  Ponds
-  Parcel Boundary

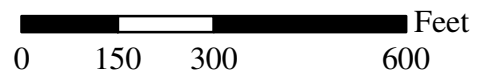
Sheet 3







**R-0623
JD Appeal Map**



**CAROLINA
ECOSYSTEMS, INC.**

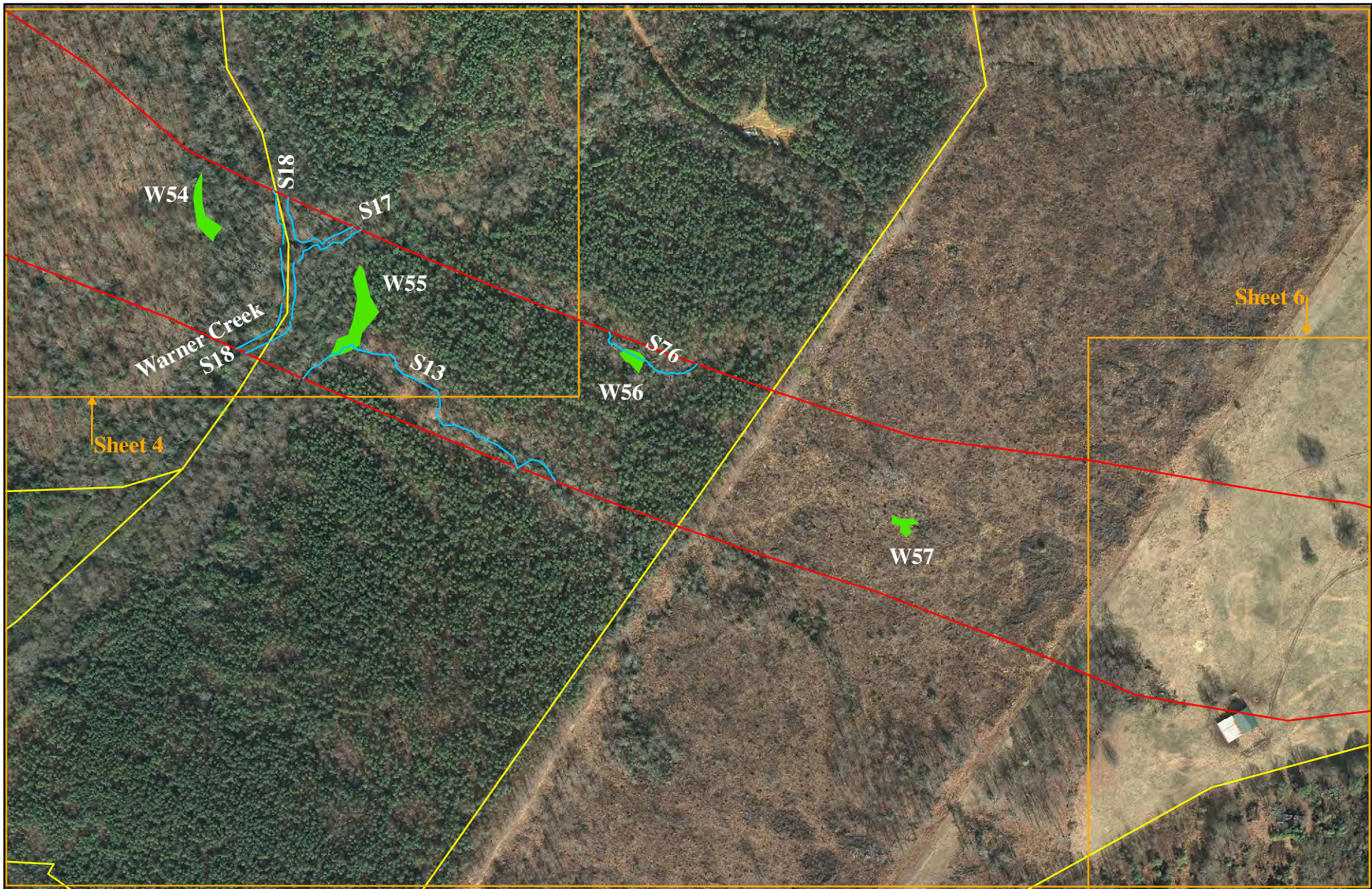
Date: March 2012



-  Streams
-  Study Area
-  Wetlands
-  Map Sheet Limits
-  Ponds
-  Parcel Boundary

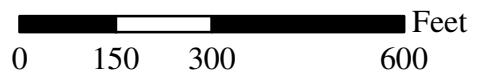
Sheet 4







**R-0623
JD Appeal Map**



**CAROLINA
ECOSYSTEMS, INC.**

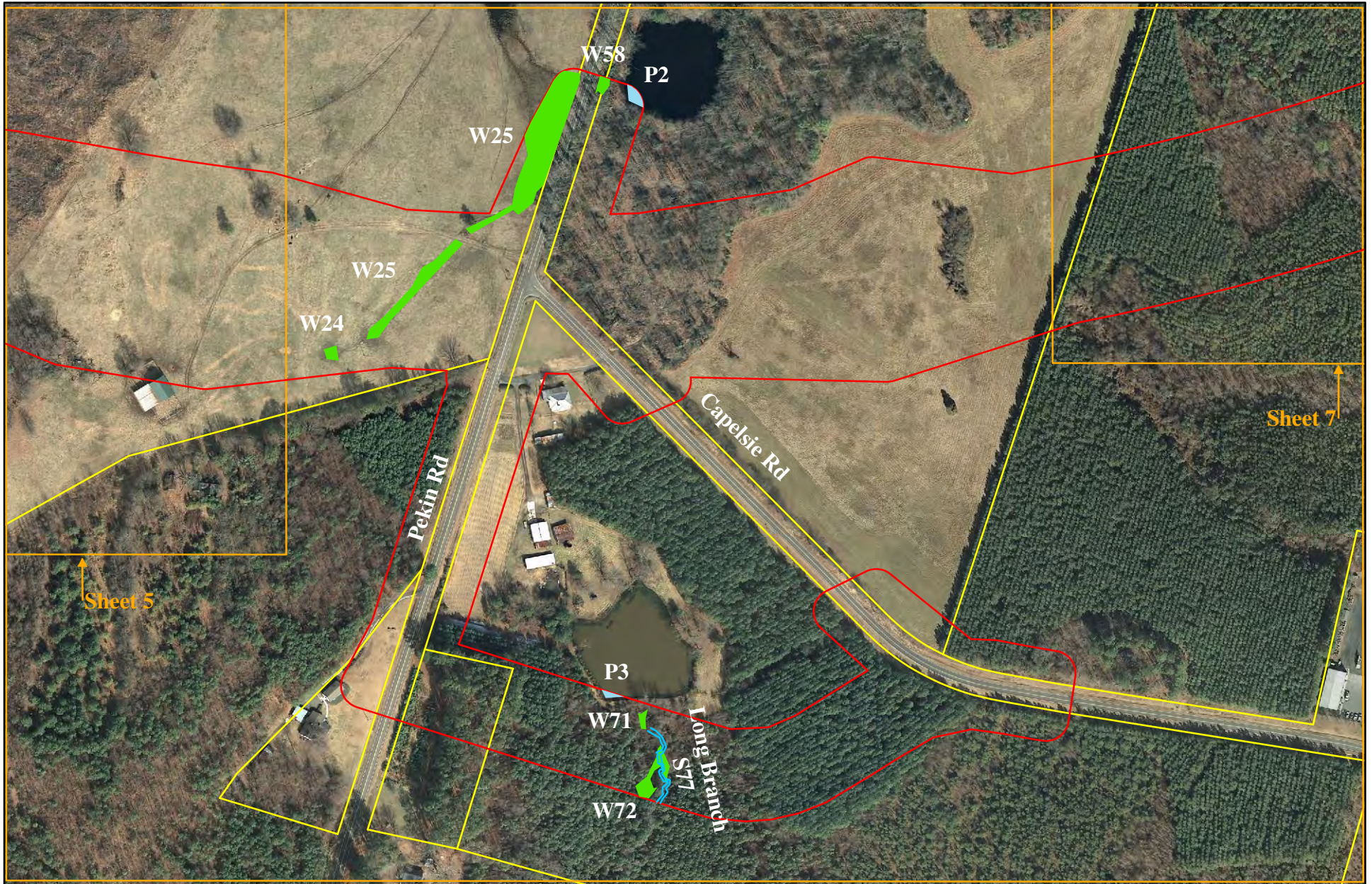
Date: March 2012



-  Streams
-  Study Area
-  Wetlands
-  Map Sheet Limits
-  Ponds
-  Parcel Boundary

Sheet 5

**R-0623
JD Appeal Map**

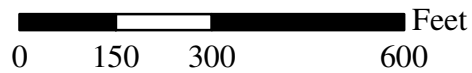


Sheet 5

Sheet 7

CAROLINA ECOSYSTEMS, INC.

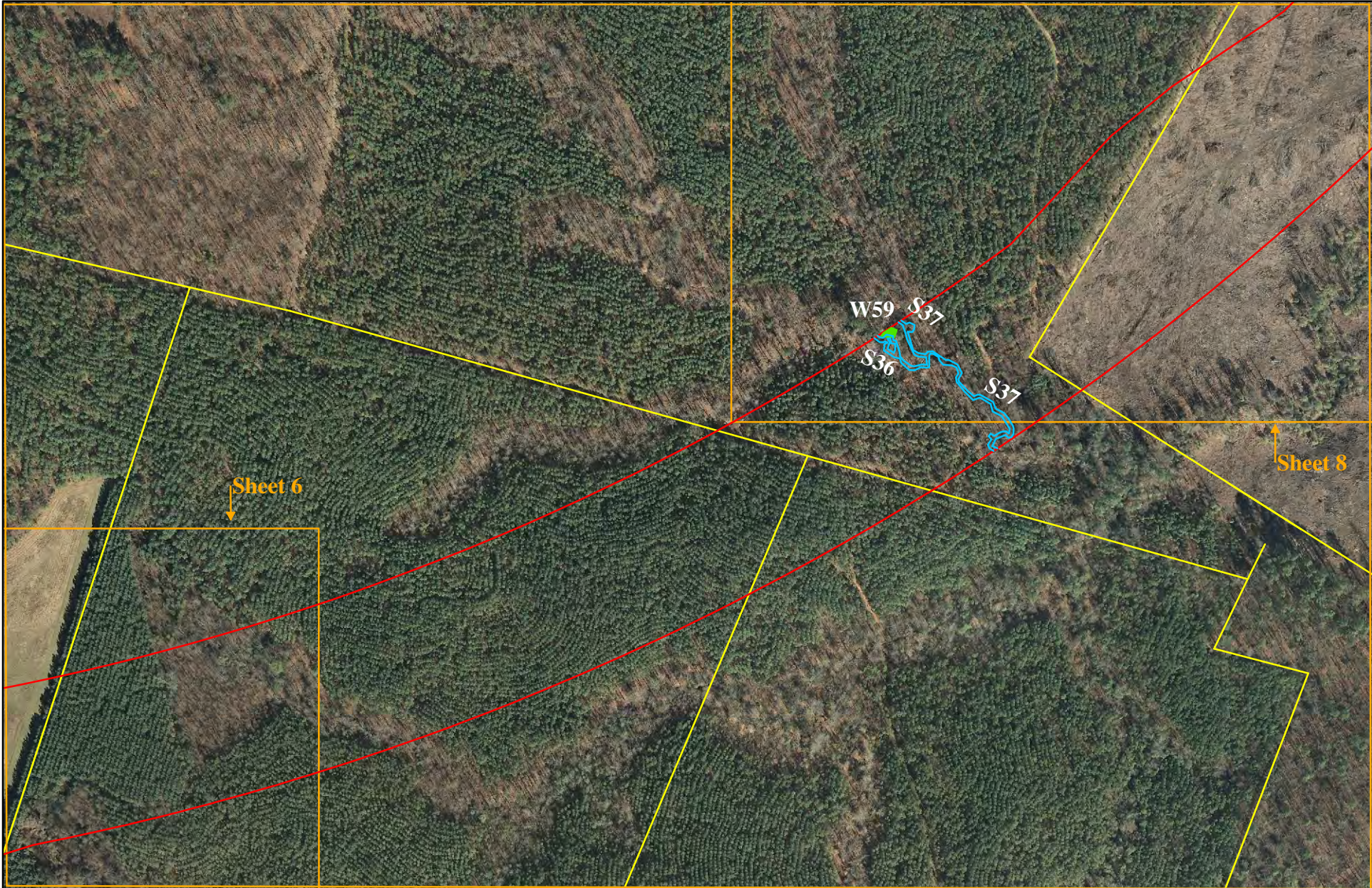
Date: March 2012



- Streams
- Study Area
- Wetlands
- Map Sheet Limits
- Ponds
- Parcel Boundary

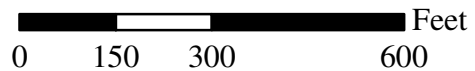
Sheet 6

**R-0623
JD Appeal Map**



CAROLINA ECOSYSTEMS, INC.

Date: March 2012



- Streams
- Study Area
- Wetlands
- Map Sheet Limits
- Ponds
- Parcel Boundary

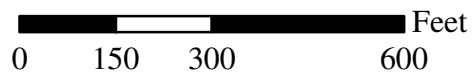
Sheet 7

**R-0623
JD Appeal Map**



**CAROLINA
ECOSYSTEMS, INC.**

Date: March 2012



- Streams
- Study Area
- Wetlands
- Map Sheet Limits
- Ponds
- Parcel Boundary

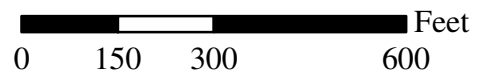
Sheet 8







**R-0623
JD Appeal Map**



**CAROLINA
ECOSYSTEMS, INC.**

Date: March 2012



-  Streams
-  Wetlands
-  Ponds
-  Study Area
-  Map Sheet Limits
-  Parcel Boundary

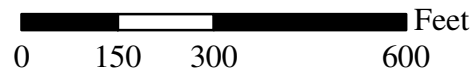
Sheet 9







**R-0623
JD Appeal Map**



CAROLINA ECOSYSTEMS, INC.

Date: March 2012



-  Streams
-  Study Area
-  Wetlands
-  Map Sheet Limits
-  Ponds
-  Parcel Boundary

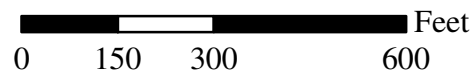
Sheet 10

**R-0623
JD Appeal Map**



CAROLINA ECOSYSTEMS, INC.

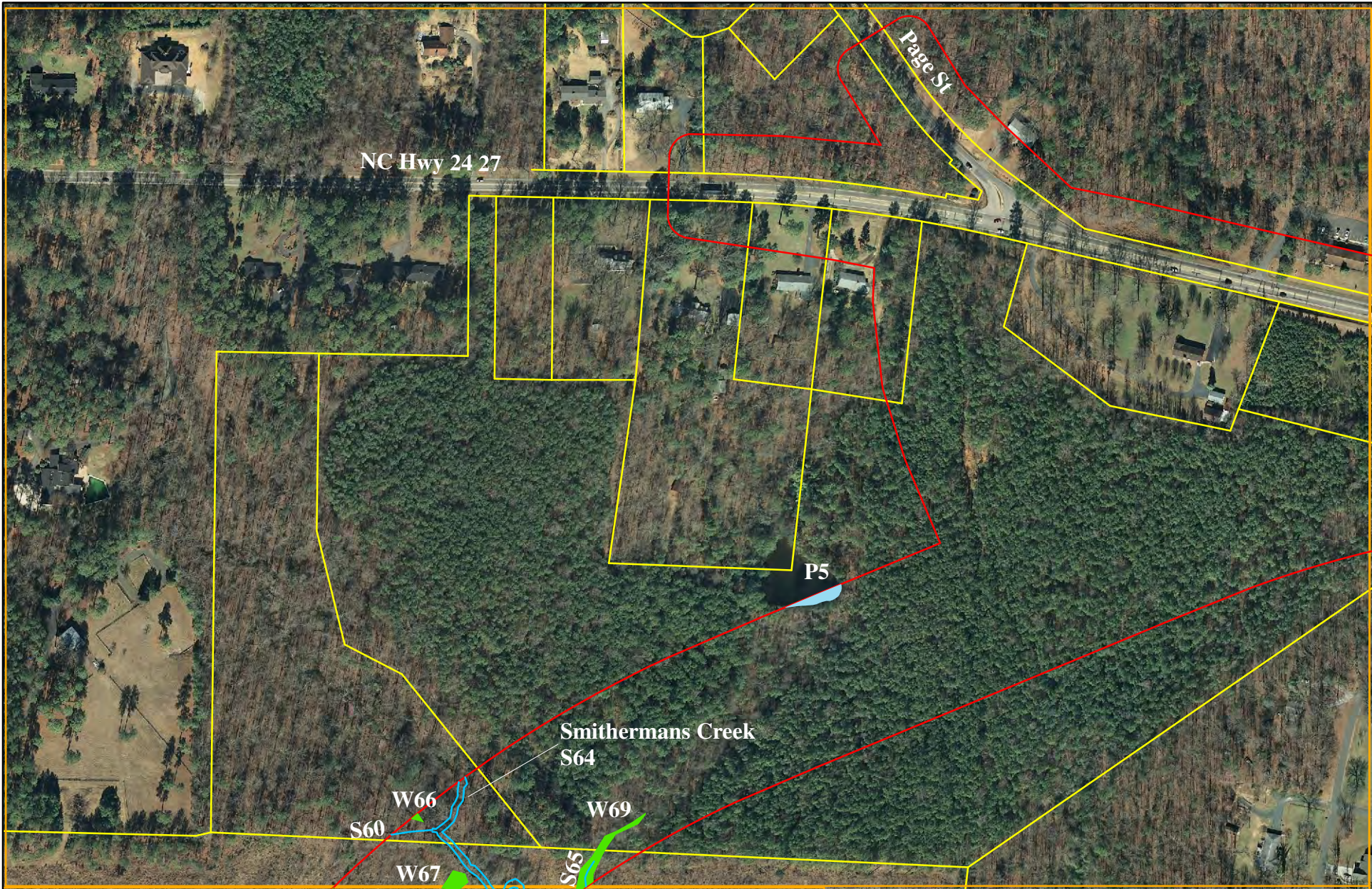
Date: March 2012



- Streams
- Study Area
- Wetlands
- Map Sheet Limits
- Ponds
- Parcel Boundary

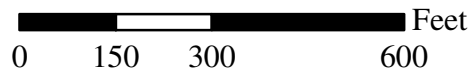
Sheet 11







**R-0623
JD Appeal Map**



CAROLINA ECOSYSTEMS, INC.

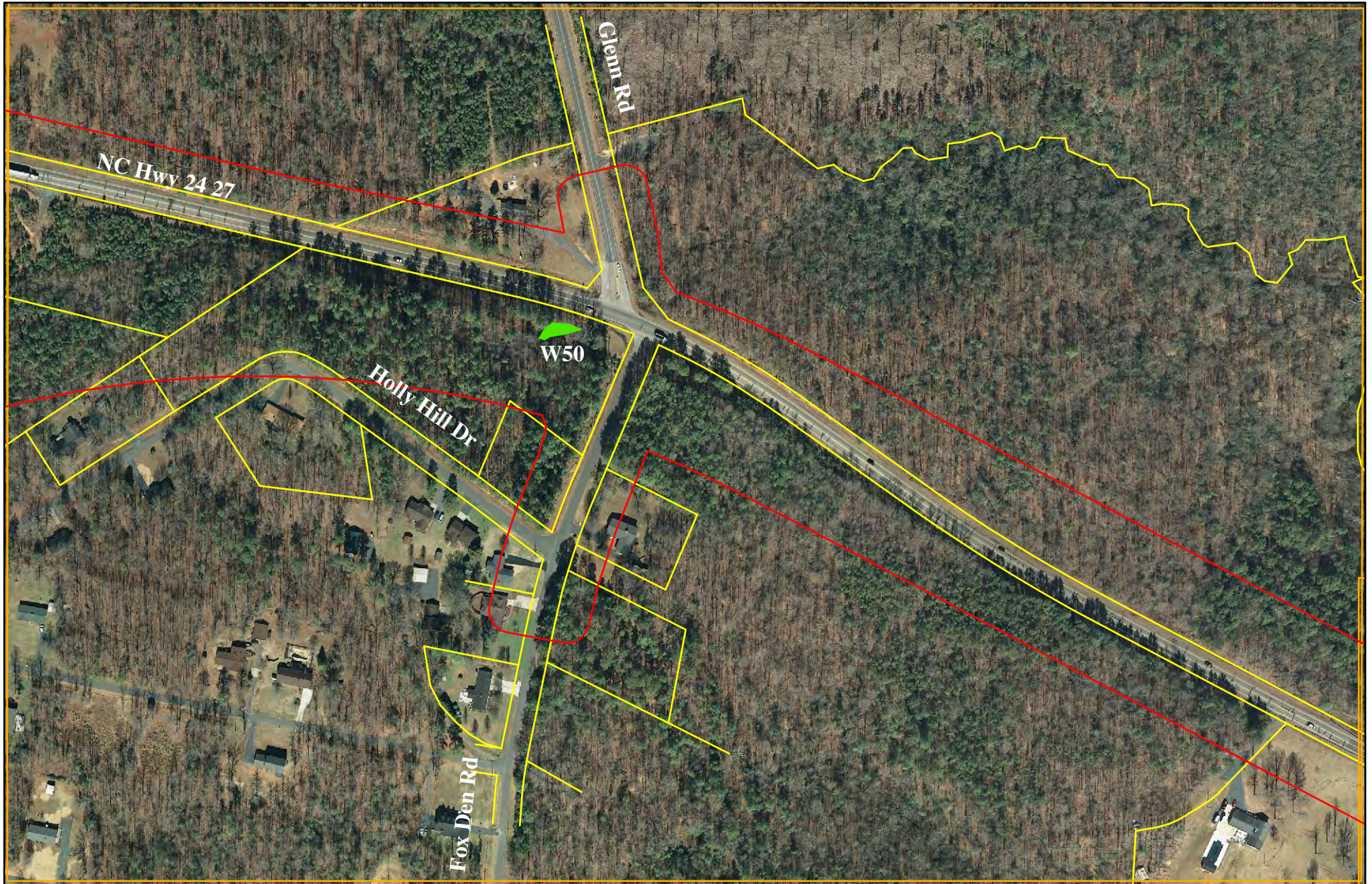
Date: March 2012



-  Streams
-  Study Area
-  Wetlands
-  Map Sheet Limits
-  Ponds
-  Parcel Boundary

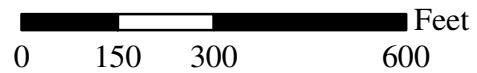
Sheet 12







**R-0623
JD Appeal Map**



**CAROLINA
ECOSYSTEMS, INC.**

Date: March 2012



-  Streams
-  Study Area
-  Wetlands
-  Map Sheet Limits
-  Ponds
-  Parcel Boundary

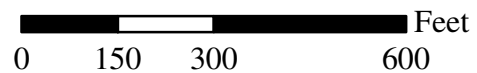
Sheet 13

**R-0623
JD Appeal Map**



**CAROLINA
ECOSYSTEMS, INC.**

Date: March 2012



- Streams
- Study Area
- Wetlands
- Map Sheet Limits
- Ponds
- Parcel Boundary

Sheet 14

**R-0623
JD Appeal Map**